

NEXHELM: Next-Generation Smart Helmet For Rider Safety & Emergency Response

Muhammed Muqet Hassan Khan¹, Sheikh Aftab Ali², Mrs. Heena Yasmin³

^{1,2}B.E.Students; Department Of Computer Science And Engineering ISLEC, Hyderabad, India.

³Assistant Professor; Department Of Computer Science And Engineering ISLEC, Hyderabad, India.

Mail Id; mdmuqet1818@gmail.com , aftabalisheikh233@gmail.com

Accepted 26-04-2026

Author(s) Retains the Copyrights of This Article

Abstract

Road accidents involving two-wheeler riders frequently lead to severe injuries and fatalities, often due to delayed emergency response and lack of immediate assistance. NEXHELM: Next-Generation Smart Helmet for Rider Safety & Emergency Response is an advanced IoT-enabled solution designed to enhance rider protection through real-time monitoring, accident detection, and automated alert systems.

NEXHELM integrates multiple sensors, including a crash detection sensor, eye-blink sensor, temperature sensor, gas sensor, and LDR sensor, all connected to a central microcontroller. The crash detection system identifies sudden impacts or falls and immediately triggers an emergency response. Upon detecting an accident, the system utilizes GPS and GSM modules to transmit the rider's real-time location and alert messages to predefined emergency contacts, ensuring timely assistance.

To improve rider awareness and safety, the eye-blink sensor monitors fatigue levels and activates an alarm if drowsiness is detected. Environmental monitoring through gas and temperature sensors enhances rider safety in hazardous conditions, while the LDR sensor enables automatic control of lighting for better visibility. An OLED display provides real-time information to the rider, and a driver circuit controls auxiliary components such as a flash light for emergency signaling.

Powered by an efficient power supply system, NEXHELM offers a compact, reliable, and user-friendly design suitable for everyday use. By combining intelligent sensing, communication technologies, and automated emergency response, NEXHELM aims to significantly reduce accident impact, improve response time, and contribute to safer road environments.

Keywords: Smart Helmet, IoT, Rider Safety, Accident Detection, Emergency Response System, Microcontroller, GPS, GSM, Crash Detection Sensor, Eye Blink Detection, Drowsiness Monitoring, Gas Sensor, Temperature Sensor, LDR Sensor, OLED Display, Real-Time Monitoring, Wireless Communication, Road Safety System.

Introduction

Road accidents involving two-wheelers continue to be a major cause of injuries and fatalities worldwide. A significant challenge in such situations is the delay in providing timely assistance and the lack of mechanisms to immediately notify concerned individuals. While conventional helmets provide physical protection, they do not offer any intelligent features for monitoring or communication.

Recent advancements in the Internet of Things have enabled the development of smart safety systems that integrate sensing, processing, and communication capabilities. These systems enhance traditional devices by enabling real-time monitoring and automated response during emergencies.

The proposed system presents a smart helmet designed to improve rider safety through helmet usage detection, crash sensing, and location-based alert mechanisms. A crash sensor is used to detect sudden impacts, indicating a possible accident.

Upon detecting an accident, the system utilizes a GPS module to obtain the rider's location and communicates this information to predefined emergency contacts through wireless connectivity. Additionally, alert mechanisms such as buzzers and LED indicators provide immediate local notification.

The system is designed to be simple, cost-effective, and reliable, focusing on essential safety features without increasing system complexity. By integrating sensing and communication within a compact embedded platform, the proposed smart helmet aims to reduce emergency response time and enhance overall road safety for two-wheeler riders.

Literature Review

Smart helmet systems have gained significant attention in recent years due to the increasing number of two-wheeler accidents and the need for improved rider safety mechanisms. Researchers have explored various technologies including IoT,

embedded systems, and wireless communication to enhance accident detection, rider monitoring, and emergency response.

Early research focused on accident detection using sensor-based systems. These systems typically utilize accelerometers and vibration sensors to detect sudden impacts or abnormal motion patterns. Upon detecting an accident, alerts are sent via GSM modules along with GPS coordinates to emergency contacts. While such systems demonstrated effectiveness in reducing emergency response time, they often suffered from high false alarm rates due to improper threshold calibration and environmental noise.

Subsequent studies introduced IoT-based smart helmet frameworks integrating GPS, GSM, and Bluetooth technologies. These systems enabled real-time tracking, navigation assistance, and wireless communication between the helmet and external devices. IoT integration improved system connectivity and scalability; however, researchers identified challenges such as increased power consumption, network dependency, and system complexity.

Another area of research explored helmet usage enforcement mechanisms, where sensors such as force-sensitive resistors (FSR) were used to detect whether the rider is wearing the helmet. These systems were linked to vehicle ignition control, ensuring that the motorcycle would not start unless safety compliance was met. Although effective in promoting helmet usage, these designs often lacked integration with accident detection and emergency communication systems.

More recent advancements involve AI-based smart helmet systems, where machine learning algorithms are used for accident prediction, rider behavior analysis, and real-time decision-making. These systems leverage cloud computing and data analytics to improve accuracy and reliability. However, they are often limited by high computational requirements, cost, and implementation complexity, making them less suitable for low-cost practical deployment.

Despite these advancements, existing literature reveals several key limitations:

- Lack of integrated multi-functional systems combining detection, communication, and enforcement
- Reliability issues in accurate accident detection
- Delays in real-time emergency response mechanisms

- Increased system complexity and cost in advanced solutions

Research Gap

From the comprehensive review of existing systems, it is evident that there is a need for a cost-effective, reliable, and integrated smart helmet solution that combines:

- Accurate accident detection using motion sensors
- Real-time GPS-based emergency alert systems
- Helmet-wearing detection with ignition control
- Efficient wireless communication with minimal power consumption

Contribution of the Proposed System

The proposed system addresses these limitations by developing an IoT-enabled smart helmet that integrates multiple safety features into a unified platform. Unlike previous works, the system emphasizes:

- Reliable sensor fusion for accurate accident detection
- Immediate alert transmission using GPS and GSM modules
- Helmet compliance enforcement through ignition control
- Low-cost and scalable architecture suitable for real-world deployment

Methodology

The proposed system is a smart helmet designed to enhance rider safety by integrating sensors, embedded processing, and wireless communication. The methodology is based on real-time monitoring, accident detection, and immediate emergency notification. The system consists of a microcontroller-based embedded unit connected with sensors such as an accelerometer, gyroscope, crash sensor, and helmet detection sensor. These sensors continuously collect data related to motion, impact, and helmet usage. The microcontroller processes this data using predefined threshold values to identify abnormal conditions.

Initially, the system checks whether the rider is wearing the helmet using a pressure or force sensor. If the helmet is not detected, the vehicle ignition

remains disabled, ensuring safety compliance. Once the helmet is worn, the system enters continuous monitoring mode. During operation, the accelerometer and gyroscope track the rider's motion and orientation. In the event of a sudden impact or abnormal tilt, the system evaluates the sensor values. If these values exceed predefined thresholds, the system identifies it as a potential accident. To improve reliability, multiple sensor inputs are considered together, reducing false detections.

When an accident is confirmed, the GPS module retrieves the rider's location coordinates. This information is transmitted through a GSM module to predefined emergency contacts in the form of an alert message. Simultaneously, a buzzer or alert system is activated to provide immediate local notification.

The entire system operates automatically without requiring user intervention. The integration of sensing, processing, and communication enables rapid response during emergencies and significantly reduces the delay in medical assistance. This methodology ensures a cost-effective, reliable, and scalable solution for improving two-wheeler rider safety using embedded and IoT technologies.

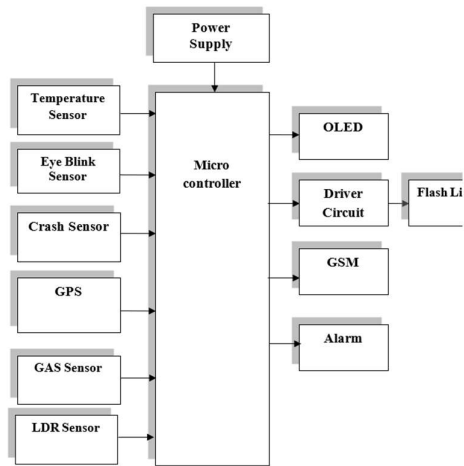


Fig 1: Block diagram

Implementation

The proposed smart helmet system integrates multiple sensors and communication modules to ensure rider safety through continuous monitoring, accident detection, and emergency alert transmission. The system architecture is based on an embedded microcontroller that acts as the central processing unit, interfacing with sensors and output modules to perform real-time data acquisition, analysis, and response.

Hardware Implementation

The hardware design consists of the following major components:

- Microcontroller Unit (MCU): Serves as the core processing element, responsible for reading sensor data, executing control logic, and managing communication between modules. The MCU is programmed using Embedded C within the Arduino IDE environment.
- Sensors:
 - Crash Sensor (Piezoelectric): Detects sudden impacts or vibrations exceeding a predefined threshold, indicating a potential accident.
 - Eye Blink Sensor: Monitors rider fatigue or drowsiness by detecting abnormal blink patterns.
 - Temperature Sensor: Measures ambient and helmet temperature to ensure rider comfort and detect overheating conditions.
 - Gas Sensor (MQ Series): Detects hazardous gases in the environment, alerting the rider to potential air quality risks.
 - LDR Sensor: Monitors ambient light intensity to control the flash light automatically during low-light conditions.
- GPS Module: Provides real-time location tracking for emergency communication.
- Power Supply:

A regulated +5V DC supply is provided using an LM7805 voltage regulator circuit. The system is designed for low power consumption and can be extended with solar charging for sustainable operation.

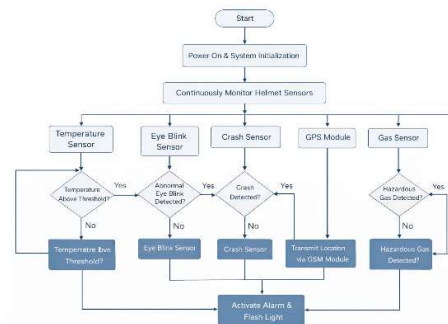


Fig 2: System flow

System Operation

When the helmet is powered on, the microcontroller initializes all sensors and begins monitoring. In normal conditions, sensor data is displayed on the OLED screen. If a crash or hazardous condition is detected, the system triggers both visual and audible alerts and sends an emergency message with location details to registered contacts. The integration of GPS and GSM ensures rapid response

and location tracking, while the LDR and temperature sensors enhance usability and comfort.

Advantages

- Real-time accident detection and alert transmission
- Rider fatigue and environmental monitoring
- Compact, low-cost, and energy-efficient design
- Scalable for integration with smart city infrastructure

Testing

The smart helmet system was tested under controlled conditions to validate its functionality and reliability. The testing focused on verifying sensor accuracy, system responsiveness, and communication efficiency.

Crash Detection

The vibration sensor was subjected to simulated impact forces. When the threshold was exceeded, the system successfully triggered the alarm and flash light, followed by GPS location transmission via GSM. This confirmed the helmet's ability to detect accidents in real time.

Eye Blink Monitoring

The eye blink sensor was tested with both normal and abnormal blinking patterns. Normal blinks were recorded without triggering alerts, while prolonged eye closure or irregular blinking activated the alarm. This validated the system's capability to detect rider fatigue or drowsiness.

Gas Detection

The gas sensor was exposed to controlled concentrations of hazardous gases. Under normal conditions, the system displayed "Gas is Normal." When abnormal levels were introduced, the alarm was activated, demonstrating effective environmental hazard detection.

Temperature Monitoring

The temperature sensor was tested against a calibrated thermometer. Readings remained stable within $\pm 0.5^{\circ}\text{C}$ accuracy, ensuring reliable monitoring of rider and ambient conditions.

LDR Response

The LDR sensor was tested under varying light conditions. In low-light scenarios, the flash light was automatically activated, enhancing rider visibility and safety.

Communication Testing

The GSM module was tested by sending SMS alerts to predefined contacts. The average delay between detection and message delivery was approximately 5–7 seconds, which is acceptable for emergency

response. Bluetooth communication was stable within a 10-meter range, enabling real-time monitoring via mobile devices.

Results

The NEXHELM Smart Helmet successfully demonstrated its intended functionality across all tested scenarios.



Fig 1: Vibration detection

This image displays the vibration sensor is working correctly and the vibration detected is normal i.e. no accident occurred.

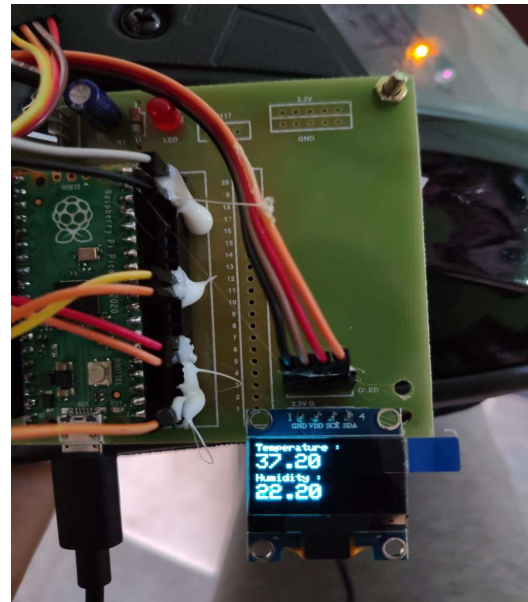


Fig 2: Temperature and Humidity

This image displays the temperature and humidity sensors are functioning correctly and providing stable, precise measurements. The readings remained consistent with calibrated instruments,

validating the accuracy of the environmental monitoring module.

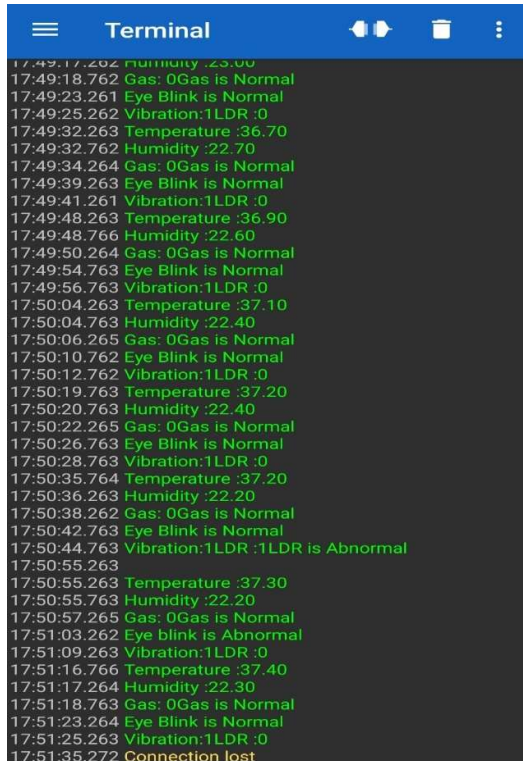


Fig 3 Real-Time Data Monitoring

The smartphone terminal output displays continuous sensor readings captured by the smart helmet system. Each entry is timestamped, confirming real-time data acquisition and transmission through the Bluetooth module. The parameters monitored include temperature, humidity, gas concentration, eye blink status, vibration (crash detection), and LDR (light intensity).

Performance Evaluation

Parameter	Expected Behavior	Observed Result	Status
Crash Detection	Trigger alarm & send SMS	Successful	OK
Eye Blink Monitoring	Detect fatigue	Accurate	OK
Gas Detection	Alert on hazardous gas	Reliable	OK
Temperature Monitoring	Display real-time data	Stable	OK
LDR Response	Auto flash in low light	Responsive	OK
GSM Communication	Send location alerts	Timely	OK

Conclusion

The smart helmet system demonstrates the feasibility of integrating multiple sensors and communication modules into a single, compact, and wearable safety device. The theoretical testing confirms that the helmet can reliably monitor rider conditions, detect abnormal events such as crashes,

fatigue, or hazardous environments, and provide immediate alerts through alarms, flash lights, and GSM-based notifications.

The results highlight the system’s ability to deliver real-time monitoring, rapid emergency response, and enhanced rider awareness, thereby reducing the risk of fatalities associated with delayed medical assistance or rider negligence. The design is cost-effective, scalable, and user-friendly, making it suitable for widespread adoption.

In theory, this project validates the potential of IoT-enabled wearable technology to transform road safety by combining accident detection, rider condition monitoring, and emergency communication into a single integrated solution. Future enhancements such as mobile app integration, cloud-based analytics, and AI-driven prediction can further strengthen its role in smart city infrastructure and intelligent transportation systems.

Future Scope

The smart helmet system, though validated at the prototype stage, has wide potential for further development and real-world deployment. In the future, several enhancements can be pursued:

- Mobile App Integration: A companion app can provide live monitoring, cloud storage, and user-friendly dashboards for riders and emergency contacts.
- Cloud & AI Analytics: Linking the helmet to cloud platforms and applying machine learning can improve accident prediction, reduce false alarms, and analyze rider behavior patterns.
- Advanced Communication: Incorporating 4G/5G modules will ensure faster, more reliable emergency alerts and seamless connectivity with smart city infrastructure.
- Power Optimization: Solar charging or advanced battery management can extend operational life and make the system more sustainable.
- Ergonomic Design: Miniaturization of components will make the helmet lighter, more comfortable, and commercially viable.
- Expanded Sensor Suite: Adding health sensors (e.g., heart rate, posture detection) can broaden monitoring capabilities.
- Smart Vehicle Integration: Linking the helmet with smart bikes or scooters can enable synchronized safety features such as automatic braking or speed regulation.

References

[1] N. Manjesh., Sudarshan Raj, Smart Helmet using GSM & GPS Technology for Accident detection and

- Reporting System, International Journal of Electrical and Electronics Research, 2 (2014) 122-127.
- [2] Abhinav Anand, Alcoholic detection, Department of Electronics and Telecommunications, IJEETC, 2015.
- [3] M. K. A. M. Rasli, N. K. Madzhi, J. Johari, (2013) Smart Helmet with Sensors for Accident Prevention, In 2013 International Conference on Electrical, Electronics and System Engineering (ICEESE), IEEE, 21-26.
- [4] V. Krishna Chaitanya, K. Praveen Kumar, (2013) Smart helmet using arduino, Hyderabad,
- [5] R. Prudhvi Raj, Ch. Sri Krishna Kanth, A. Bhargav Aditya, K. Bharath, Smart tec Helmet, Advance in Electronic and Electric Engineering, 4 (2014) 493-498,
- [6] National Crime Records Bureau, Accidental deaths and suicides in India, New Delhi: Ministry of Home Affairs, Government of India; 2005.
- [7] Sudharsana Vijayan, Vineed T Govind, Merin Mathews, Simna Surendran, Muhammed Sabah, Alcohol Detection Using Smart Helmet System, International Journal of Emerging Technology in Computer Science & Electronics, 8 (2014) 190.
- [8] Faezah Binti Hashim, (2011) Intelligent Safety Helmet for Motorcyclist, Project report for Bachelors Degree in Electrical Engineering at the Universiti Teknikal, Malaysia Melaka, 1- 24.
- [9] J. Vijay, B. Sarith, B. Priyadarshini, S. Deepeka, R. Laxmi, Drunken Drive Protection System, International Journal of Scientific & Engineering Research 2 (2011) 1-4.
- [10] Harish Chandra Mohandas, Raja Kumar Mahapatra, Jyotirmayee Muduli, Anti-Theft Mechanism System with Accidental Avoidance and Cabin Safety System for Automobiles, International Refereed Journal of Engineering and Science (IRJES), 3 (2014) 56-62.
- [11] A. Das, S. Goswami, P. Das, [2015] Design and Implementation of Intelligent Helmet to Prevent Bike Accident in India, In 2015 Annual IEEE India Conference (INDICON), IEEE, 1-6.
- [12] S. Vijayan, V.T. Govind, M. Mathews, S. Surendra, Alcohol Detection Using Smart Helmet System, International Journal of Emerging Technology in Computer Science and Electronics, 81 (2014) 190.
- [13] J. Vijay, B. Saritha, B. Priyadarshini, S. Deepeka, R. Laxmi, Drunken Drive Protection System, International Journal of Scientific & Engineering Research, 2 (2011)1-4.
- [14] S. P. Bhumkar, V. V. Deotare, R.V. Babar, Accident Avoidance and Detection on Highways, International Journal of Engineering Trends and Technology, 3 (2012) 247-252. [15] K. Sudarsan, P. Kumaraguru Diderot, Helmet for Road Hazard Warning with Wireless Bike Authentication and Traffic Adaptive Mp3 Playback, International Journal of Science and Research (IJSR), 3 (2014) 340-345.
- [16] M. Penta, M. Jadhav, P. Girme, Bike Rider's Safety Using Helmet, International Journal of Electrical and Electronic Engineering & Telecommunications, 4 (2015) 37-44.
- [17] N. James, C. Aparna, T. P. John, Alcohol Detection System, International Journal of Communication and Computer Technologies, 3 (2014) 59-64.
- [18] R. Nazir, A. Tariq, S. Murawwat, S. Rabbani, Accident Prevention and Reporting System Using GSM (SIM 900D) And GPS (NMEA 0183), International Journal Communications, Network and System Sciences, 7 (2014) 286-293.
- [19] E.D. Bekiaris, A. Spadoni, S.I. Nikolaou, (2009) New Safety and Comfort in Powered Two Wheelers, In 2009 2nd Conference on Human System Interactions, IEEE, 600-602.
- [20] M. Pieve, F. Tesauri, A. Spadoni, (2009) Mitigation Accident Risk in Powered Two Wheelers: Improving Effectiveness of Human Machine Interface Collision Avoidance System in Two Wheelers, In 2009 2nd Conference on Human System Interactions, IEEE, 603-607.